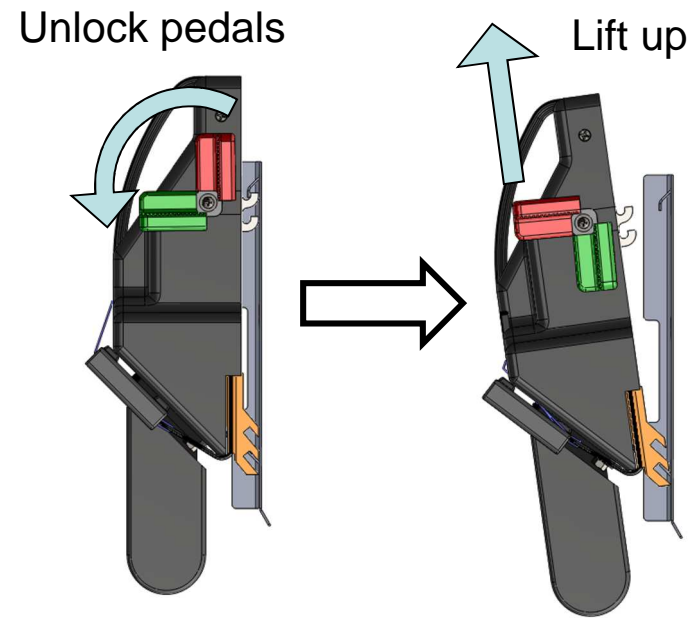


# Operating Instructions - Holland Vehicle Restraint System (VRS)

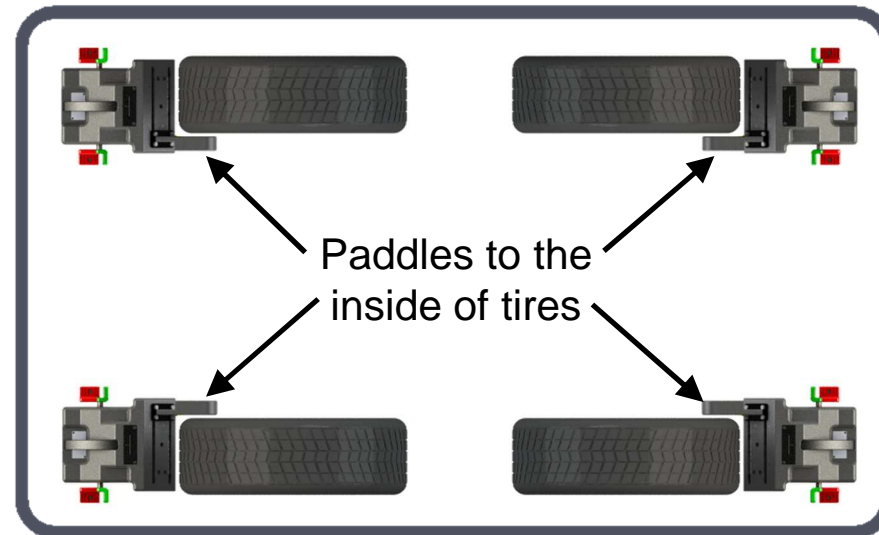
## Loading Procedure

### 1. Unlock and remove from storage plate



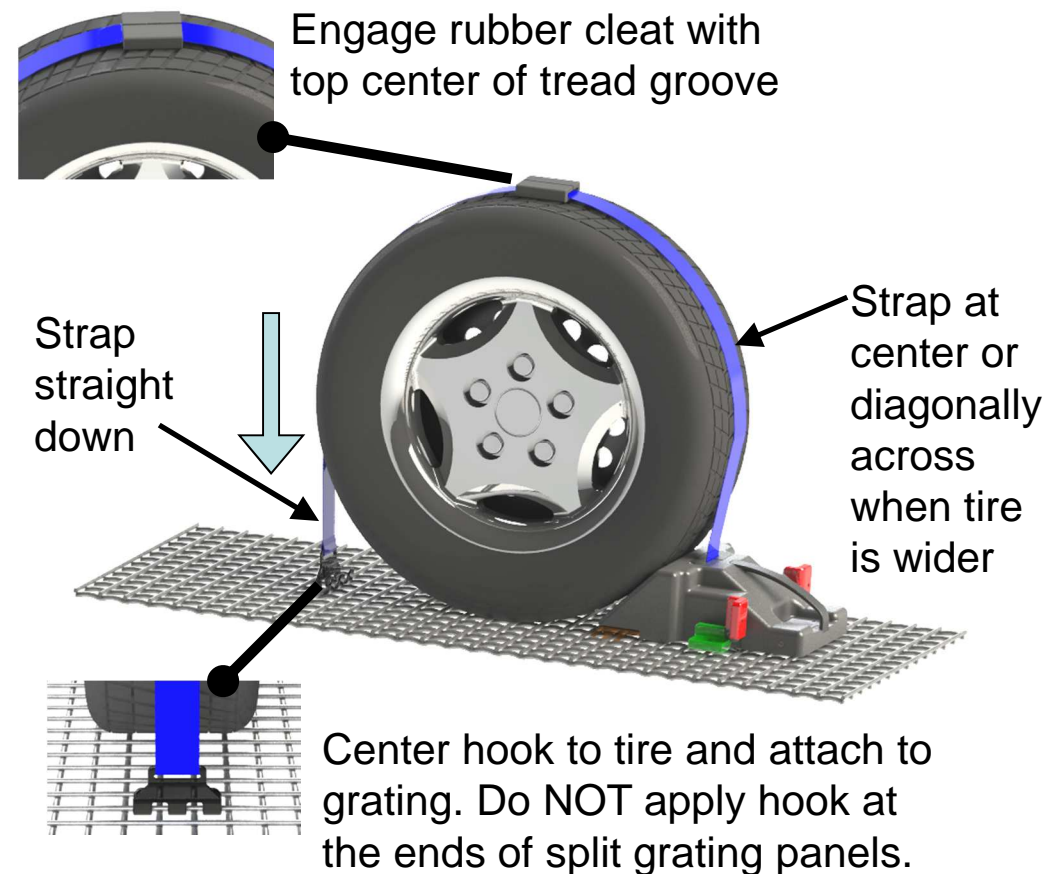
### 2. Arrangement

- 2a. Make sure VRS paddle is to the inside of the tire.
- 2b. Position VRS outboard of the vehicle.



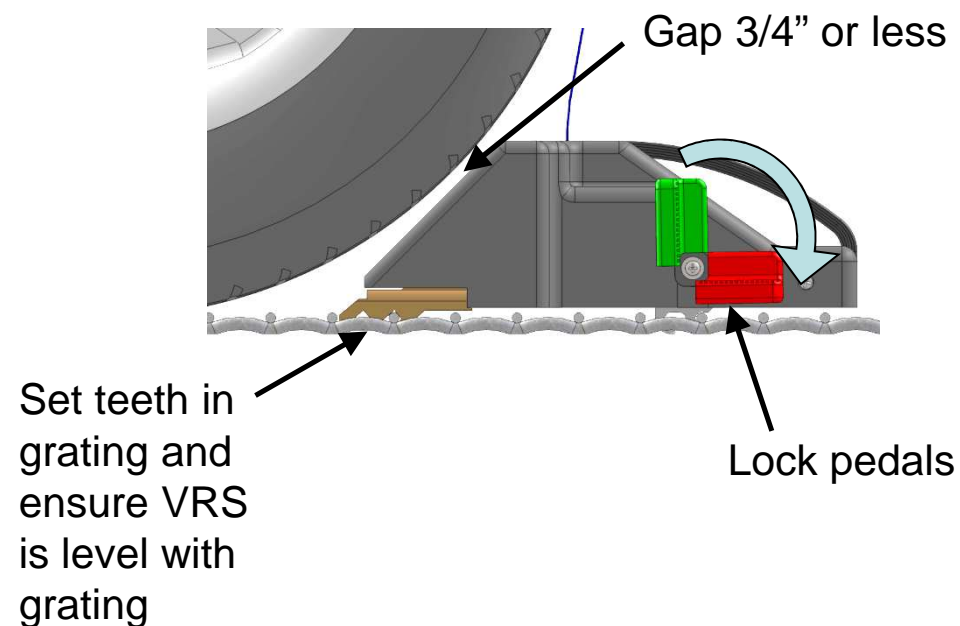
VRS Placement for vehicle's tires

### 3. Installation



### 4. Locking

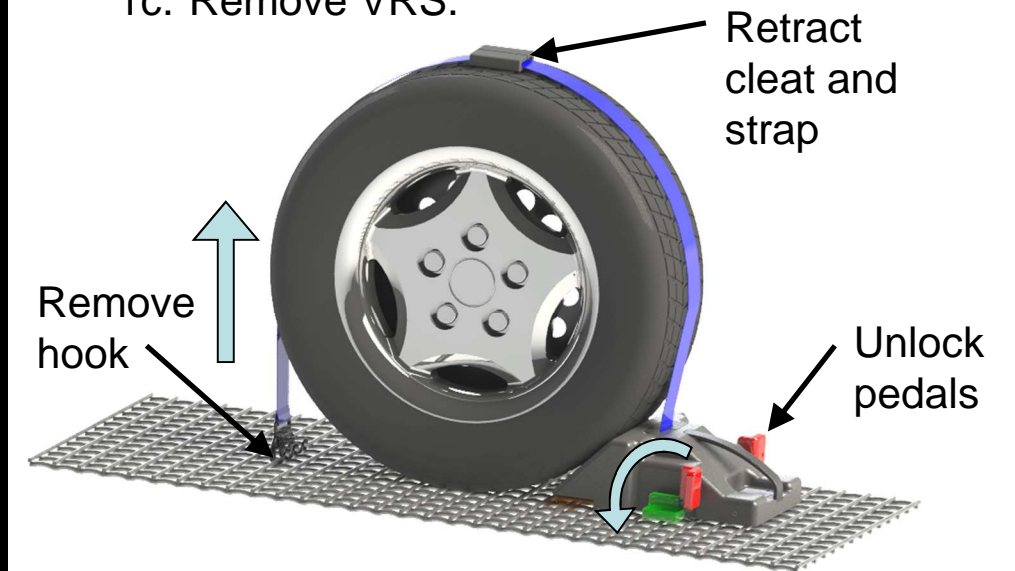
- 4a. Position ramp close to tire as shown.
- 4b. Make sure teeth secured properly in grating.
- 4c. Lock pedals.
- 4d. Tug handle to ensure VRS is locked. If not, unlock and repeat installation.



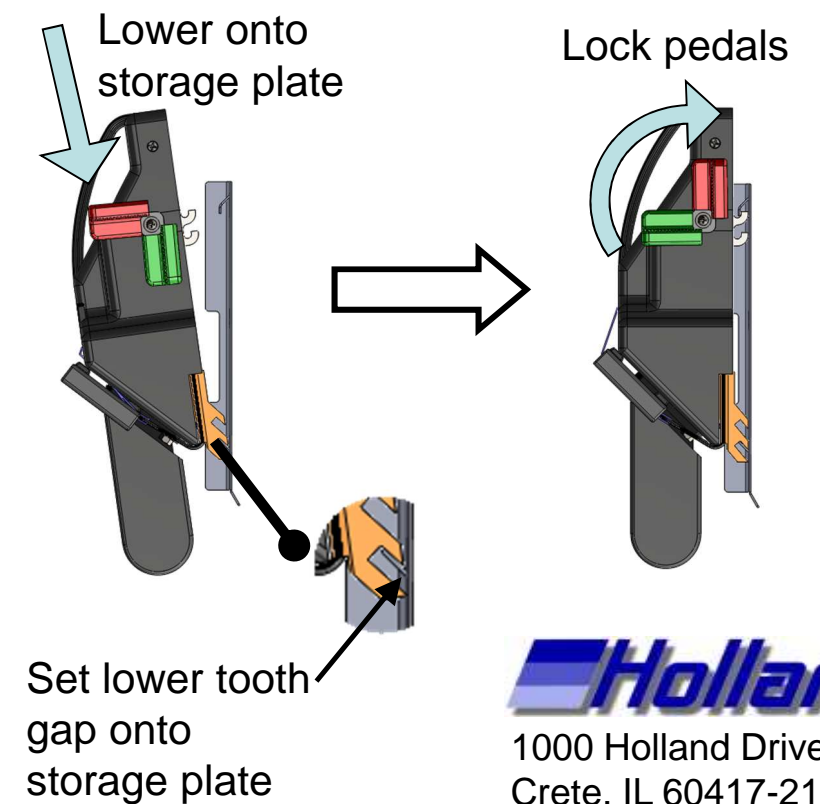
## Unloading Procedure

### 1. Removal

- 1a. Unlock pedals.
- 1b. Retract hook, cleat, and strap into VRS.
- 1c. Remove VRS.



### 2. Secure to storage plate



1000 Holland Drive  
Crete, IL 60417-2120  
Phone: (708) 672-2300  
www.hollandco.com